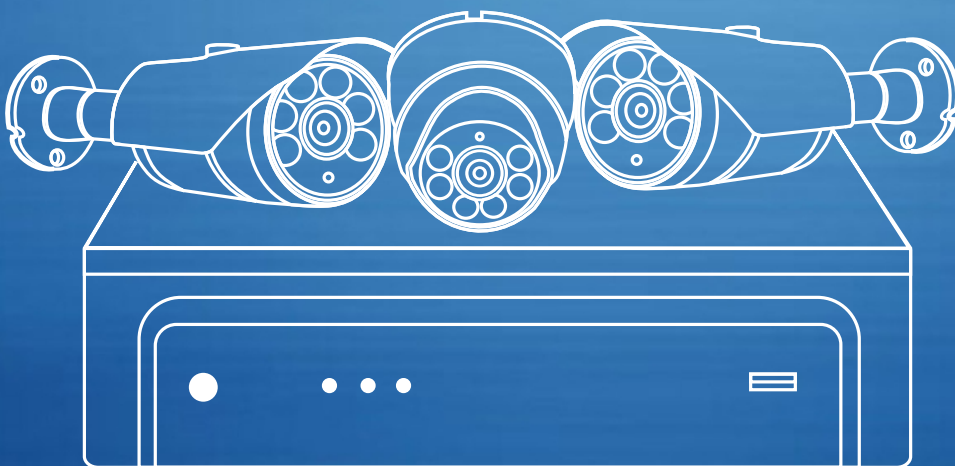


# PRODUCT CATALOGUE

AHD Camera / IP Camera / PTZ Camera / DVR / NVR

2018-19





## Quality Policy

“Customer Satisfaction through Quality & Reliability of our Products and services, to be achieved by our will to deliver better by consistently improving our products, systems and procedure.”

**Vintron**  
.....the name you trust



## Successful Journey of 25 Years in Electronics Manufacturing



ISO 14001 : 2004



RoHS



FCC



CE



ISO 9001 : 2008

## P r o f i l e

Vintron Informatics Ltd. is a Professional Manufacturer of Electronic Security and Surveillance products. The state-of-the-art manufacturing facility based at OKHLA Industrial Area Phase-1, New Delhi, consists of 8 high-speed SMT machines having a combined capacity of making more than 500,000 CCTV board cameras per month. We have more than 200 qualified workers and our facility covers 4,000 square meters. Our facility has **ROHS, CE, FCC and ISO ACCREDITATION**.

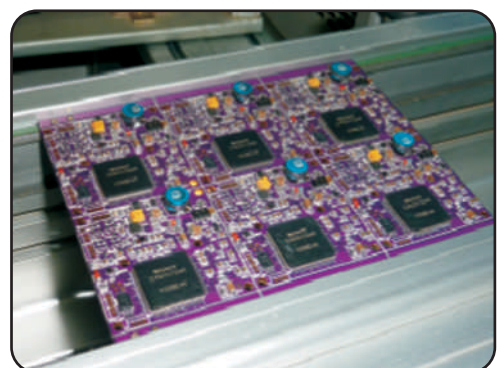
Vintron sells through its extensive Dealer Network all over India, and also provides OEM services. To ensure the quality and reliability of our products, all our products go through full QC inspection and functional testing.

### Our product portfolio includes:

- AHD Camera
- IP Camera
- WiFi NVR Kit
- AHD DVR (Digital Video Recorder)
- HD NVR (Network Video Recorder)
- PTZ (Speed Dome Camera)
- Mobile DVR
- Power Supply
- Panoramic Camera & 360° Fish Eye Camera
- SD Card WiFi Camera

### Our Certifications:

- CE
- FCC
- RoHS
- ISO 14001:2004
- ISO 9001:2008





## Manufacturing Process

SMT



CCTV Board Testing



DVR & NVR  
aging test lasts  
for 24 hours



Board Camera  
aging test lasts  
for 24 hours



Board Camera  
QC Test



Camera  
Assembly



Packaging



Finished Camera  
aging test lasts  
for 24 hours







## TABLE OF CONTENTS

<b>PIN-HOLE CAMERA</b>	1
<b>PANORAMIC / FISH EYE CAMERA</b>	2
<b>AHD CAMERA</b>	3
AHD 1.0MP	3-4
AHD 1.3MP	5-6
AHD 2.4MP	7-8
AHD 3.0MP	9
AHD 4.0MP	10
<b>IP CAMERA</b>	11
IP 1.3MP	11-12
IP 2.0MP	13-14
IP 3.0MP	15-16
IP 4.0MP	17-18
IP 5.0MP	19-20
<b>AHD DVR (Digital Video Recorder)</b>	21
2.0MP DVR	21-22
4.0MP DVR	23
<b>MOBILE DVR</b>	24
<b>NVR (Network Video Recorder)</b>	25-26
H.264 NVR	25
H.265 NVR	26
<b>AHD / IP PTZ CAMERA</b>	27-28
<b>WI-FI NVR KIT</b>	29
<b>POWER SUPPLY</b>	30

## PIN-HOLE CAMERA



Specification	VIN-HD-L14-10PH	VIN-HD-L14-13PH	VIN-HD-L14-20PH
Image sensor	1/4" HD CMOS	1/3" HD CMOS	1/2.9" HD CMOS
Camera Pixel	720P	960P	1080P
Resolution	PAL / NTSC 1280 X 720	PAL / NTSC 1280 X 960	PAL / NTSC 1920 X 1080
Minimum Illumination	0.1 Lux (Color/Day)	0.1 Lux (Color/Day)	0.1 Lux (Color/Day)
Shutter Type	Electronic Rolling Shutter	Electronic Rolling Shutter	Electronic Rolling Shutter
S/N Ratio	>46 DB (AGC OFF)	>52 DB (AGC OFF)	>52 DB (AGC OFF)
White Balance	Auto Tracking White Balance	Auto Tracking White Balance	Auto Tracking White Balance
Back Light Compensation	Auto	Auto	Auto
Lens Furnished	Pinhole Lens 2.8mm	Pinhole Lens 2.8mm	Pinhole Lens 2.8mm
Gain Control	Auto	Auto	Auto
Video Output	1.0 V p-p, 75Ω	1.0 V p-p, 75Ω	1.0 V p-p, 75Ω
Power Source	12V DC / ±10%	12V DC / ±10%	12V DC / ±10%
Current Down	100mA (Max.)	100mA (Max.)	100mA (Max.)
Operating Temperature	-0 C - +55 C	-0 C - +55 C	-0 C - +55 C



## PANORAMIC / FISH EYE CAMERA



Specification	VIN-IP-L17-CD-720	VIN-IP-L17-CD-108	VIN-IP-L17-FE-108
Embedded Processor	AK3918E	GM8135S	GM8135S
Sensor	Sc1145	Sc2145	Sc2135
Lens	1/2.5 Fisheye lens, f=1.44mm	1/2.5 Fisheye lens, f=1.44mm	1/2.5 Fisheye lens, f=1.44mm
View angle	180°	180°	360°
Image pixels	1MP	2MP	2MP
Minimum illumination	4500mV/Lux-s 0.01Lux@F2.0,black/white 0.001Lux@F2.0	4500mV/Lux-s 0.01Lux@F2.0,black/white 0.001Lux@F2.0	4500mV/Lux-s 0.01Lux@F2.0,black/white 0.001Lux@F2.0
Day and night	IR-cut double filter automatic switching	IR-cut double filter automatic switching	IR-cut double filter automatic switching
Video coding	H.264, dual stream	H.264, dual stream	H.264, dual stream
Video frame rate	25frame/second	25frame/second	25frame/second
Image resolution	Max 1280×720	Max: 1920x1080	Max: 1920x1080
Audio coding	ADPCM, support two way voice intercom	ADPCM, support two way voice intercom	ADPCM, support two way voice intercom
Network Interface	NO	NO	NO
Wireless standard	IEEE802.11b/g/n	IEEE802.11b/g/n	IEEE802.11b/g/n
Frequency range	2.4GHz~2.4835 GHz	2.4GHz~2.4835 GHz	2.4GHz~2.4835 GHz
Power port	Micro USB	Micro USB	Micro USB
Storage port	1pcs TF (Micro SD storage port, max 64G	1pcs TF (Micro SD storage port, max 64G	1pcs TF (Micro SD storage port, max 64G
Reset port	Master reset	Master reset	Master reset
Power supply and Consumption	DC5V, standard1.6A	DC5V, standard1.6A	DC5V, standard1.6A
Working condition	-10C~+50C@humidity 10%~ 95% no condensation	-10C~+50C@humidity 10%~ 95% no condensation	-10C~+50C@humidity 10%~ 95% no condensation
Net weight	65.6g	104.4g	70.4g
Weight	207.4g	267.2g	229.8g
Host size	40*40*110mm	60*72*110mm	91*40mm
Packing size	110*48*180mm	95.5*81*194mm	110*48*180mm
APP function (English)	Support IOS/Android	Support IOS/Android	Support IOS/Android

## AHD 1.0MP CAMERA



Specification	VIN-AHD-A17-10ID-AR-6	VIN-AHD-L202-10IB-AR6	VIN-AHD-G17-10IB-AR-6
Image Sensor	1/4" HD-CMOS	1/4" HD-CMOS	1/4" HD-CMOS
Resolution	PAL/NTSC : 1280 x 720	PAL/NTSC : 1280 x 720	PAL/NTSC : 1280 x 720
Minimum Illumintion	0.1Lux (Color/Day) , 0Lux(B/W)	0.1Lux (Color/Day) , 0Lux(B/W)	0.1Lux (Color/Day) , 0Lux(B/W)
Shutter Type	1/50(1/60)s~1/100,000s	1/50(1/60)s~1/100,000s	1/50(1/60)s~1/100,000s
Camera Pixels	1.0MP (720P)	1.0MP (720P)	1.0MP (720P)
White Balance	Auto Tracking White Balance	Auto Tracking White Balance	Auto Tracking White Balance
Backlight Compensation	Auto	Auto	Auto
Lens Furnished	3.6mm MP HD Lens	3.6mm MP HD Lens	3.6mm MP HD Lens
Lens Type	HD Lens / IR Cut Filter	HD Lens / IR Cut Filter	HD Lens / IR Cut Filter
Gain Control	Auto	Auto	Auto
3D-DNR (3D Digital Noise Reduction)	Auto	Auto	Auto
IR LED / IR Distance	6-Array IR / 20-30 Mtr.	6-Array IR / 20-30 Mtr.	6-Array IR / 20-30 Mtr.
Video Output	AHD - BNC	AHD - BNC	AHD - BNC
Power Source	12 V DC ± 10%	12 V DC ± 10%	12 V DC ± 10%
Current Drawn	500mA (Max.)	500mA (Max.)	500mA (Max.)
Operating Temperature	-10°C to +55°C	-10°C to +55°C	-10°C to +55°C

## AHD 1.0MP CAMERA



Specification	VIN-AHD-L60P-10IB-AR3	VIN-AHD-L14-10IB42-VF	VIN-AHD-L14-10AR-A6
Image Sensor	1/4" HD-CMOS	1/4" HD-CMOS	1/4" HD-CMOS
Resolution	PAL/NTSC : 1280x720	PAL/NTSC : 1280x720	PAL/NTSC : 1280x720
Minimum Illumintion	0.1Lux (Color/Day) , 0Lux(B/W)	0.1Lux (Color/Day) , 0Lux(B/W)	0.1Lux (Color/Day) , 0Lux(B/W)
Shutter Type	1/50(1/60)s~1/100,000s	1/50(1/60)s~1/100,000s	1/50(1/60)s~1/100,000s
Camera Pixels	1.0MP(720P)	1.0MP(720P)	1.0MP(720P)
White Balance	Auto Tracking White Balance	Auto Tracking White Balance	Auto Tracking White Balance
Backlight Compensation	Auto	Auto	Auto
Lens Furnished	3.6mm MP HD Lens	2.8~12mm Varifocal Lens	CS Lens 8mm
Lens Type	HD Lens / IR Cut Filter	HD Lens / IR Cut Filter	HD Lens / IR Cut Filter
Gain Control	Auto	Auto	Auto
3D-DNR (3D Digital Noise Reduction)	Auto	Auto	Auto
IR LED / IR Distance	3 Array IR / 10-20 Mtr.	42 IR ø 5mm 12 MIL/ 40-50Mtr..	6- Array IR 42 MIL / 80-100 Mtr.
Video Output	AHD - BNC	AHD - BNC	AHD - BNC
Power Source	12 V DC ± 10%	12 V DC ± 10%	12 V DC ± 10%
Current Drawn	550mA (Max.)	550mA (Max.)	1600mA (Max.)
Operating Temperature	-10°C to +55°C	-10°C to +55°C	-10°C to +55°C

## AHD 1.3MP CAMERA



Specification	VIN-AHD-A17-13ID-AR-6	VIN-AHD-L202-13IB-AR6	VIN-AHD-G17-13IB-AR-6
Image Sensor	1/3" HD-CMOS	1/3" HD-CMOS	1/3" HD-CMOS
Resolution	PAL/NTSC : 1280 x 960	PAL/NTSC : 1280 x 960	PAL/NTSC : 1280 x 960
Minimum Illumintion	0.1Lux (Color/Day) , 0Lux(B/W)	0.1Lux (Color/Day) , 0Lux(B/W)	0.1Lux (Color/Day) , 0Lux(B/W)
Shutter Type	1/50(1/60)s~1/100,000s	1/50(1/60)s~1/100,000s	1/50(1/60)s~1/100,000s
Camera Pixels	1.3MP (960P)	1.3MP (960P)	1.3MP (960P)
White Balance	Auto Tracking White Balance	Auto Tracking White Balance	Auto Tracking White Balance
Backlight Compensation	Auto	Auto	Auto
Lens Furnished	3.6mm MP HD Lens	3.6mm MP HD Lens	3.6mm MP HD Lens
Lens Type	HD Lens / IR Cut Filter	HD Lens / IR Cut Filter	HD Lens / IR Cut Filter
Gain Control	Auto	Auto	Auto
3D-DNR (3D Digital Noise Reduction)	Auto	Auto	Auto
IR LED / IR Distance	6-Array IR / 20-30 Mtr.	6-Array IR / 20-30 Mtr.	6-Array IR / 20-30 Mtr.
Video Output	AHD - BNC	AHD - BNC	AHD - BNC
Power Source	12 V DC ± 10%	12 V DC ± 10%	12 V DC ± 10%
Current Drawn	500mA (Max.)	500mA (Max.)	500mA (Max.)
Operating Temperature	-10°C to +55°C	-10°C to +55°C	-10°C to +55°C

## AHD 1.3MP CAMERA



Specification	VIN-AHD-L60P-13IB-AR3	VIN-AHD-L14-13IB42-VF	VIN-AHD-L14-13AR-A6
Image Sensor	1/3" HD-CMOS	1/3" HD-CMOS	1/3" HD-CMOS
Resolution	PAL/NTSC : 1280x960	PAL/NTSC : 1280x960	PAL/NTSC : 1280x960
Minimum Illumintion	0.1Lux (Color/Day) , 0Lux(B/W)	0.1Lux (Color/Day) , 0Lux(B/W)	0.1Lux (Color/Day) , 0Lux(B/W)
Shutter Type	1/50(1/60)s~1/100,000s	1/50(1/60)s~1/100,000s	1/50(1/60)s~1/100,000s
Camera Pixels	1.3MP(960P)	1.3MP(960P)	1.3MP(960P)
White Balance	Auto Tracking White Balance	Auto Tracking White Balance	Auto Tracking White Balance
Backlight Compensation	Auto	Auto	Auto
Lens Furnished	3.6mm MP HD Lens	2.8~12mm Varifocal Lens	CS Lens 8mm
Lens Type	HD Lens / IR Cut Filter	HD Lens / IR Cut Filter	HD Lens / IR Cut Filter
Gain Control	Auto	Auto	Auto
3D-DNR (3D Digital Noise Reduction)	Auto	Auto	Auto
IR LED / IR Distance	3 Array IR / 10-20 Mtr.	42 IR ø 5mm 12 MIL/ 40-50Mtr..	6- Array IR 42 MIL / 80-100 Mtr.
Video Output	AHD - BNC	AHD - BNC	AHD - BNC
Power Source	12 V DC ± 10%	12 V DC ± 10%	12 V DC ± 10%
Current Drawn	550mA (Max.)	550mA (Max.)	1600mA (Max.)
Operating Temperature	-10°C to +55°C	-10°C to +55°C	-10°C to +55°C

## AHD 2.4MP CAMERA



Specification	VIN-AHD-A17-201D-AR-6	VIN-AHD-L202-201B-AR6	VIN-AHD-G17-201B-AR-6
Image Sensor	1/2.9" HD-CMOS	1/2.9" HD-CMOS	1/2.9" HD-CMOS
Resolution	PAL/NTSC : 1920 x 1080	PAL/NTSC : 1920 x 1080	PAL/NTSC : 1920 x 1080
Minimum Illumintion	0.1Lux (Color/Day) , 0Lux(B/W)	0.1Lux (Color/Day) , 0Lux(B/W)	0.1Lux (Color/Day) , 0Lux(B/W)
Shutter Type	1/50(1/60)s~1/100,000s	1/50(1/60)s~1/100,000s	1/50(1/60)s~1/100,000s
Camera Pixels	2.4MP	2.4MP	2.4MP
White Balance	Auto Tracking White Balance	Auto Tracking White Balance	Auto Tracking White Balance
Backlight Compensation	Auto	Auto	Auto
Lens Furnished	3.6mm MP HD Lens	3.6mm MP HD Lens	3.6mm MP HD Lens
Lens Type	HD Lens / IR Cut Filter	HD Lens / IR Cut Filter	HD Lens / IR Cut Filter
Gain Control	Auto	Auto	Auto
3D-DNR (3D Digital Noise Reduction)	Auto	Auto	Auto
IR LED / IR Distance	6-Array IR / 20-30 Mtr.	6-Array IR / 20-30 Mtr.	6-Array IR / 20-30 Mtr.
Video Output	AHD - BNC	AHD - BNC	AHD - BNC
Power Source	12 V DC $\pm$ 10%	12 V DC $\pm$ 10%	12 V DC $\pm$ 10%
Current Drawn	500mA (Max.)	500mA (Max.)	500mA (Max.)
Operating Temperature	-10°C to +55°C	-10°C to +55°C	-10°C to +55°C

## AHD 2.4MP CAMERA



Specification	VIN-AHD-L60P-20IB-AR3	VIN-AHD-L14-20IB42-VF	VIN-AHD-L14-20AR-A6
Image Sensor	1/2.9" HD-CMOS	1/2.9" HD-CMOS	1/2.9" HD-CMOS
Resolution	PAL/NTSC : 1920x1080	PAL/NTSC : 1920x1080	PAL/NTSC : 1920x1080
Minimum Illumintion	0.1Lux (Color/Day) , 0Lux(B/W)	0.1Lux (Color/Day) , 0Lux(B/W)	0.1Lux (Color/Day) , 0Lux(B/W)
Shutter Type	1/50(1/60)s~1/100,000s	1/50(1/60)s~1/100,000s	1/50(1/60)s~1/100,000s
Camera Pixels	2.4MP	2.4MP	2.4MP
White Balance	Auto Tracking White Balance	Auto Tracking White Balance	Auto Tracking White Balance
Backlight Compensation	Auto	Auto	Auto
Lens Furnished	3.6mm MP HD Lens	2.8~12mm Varifocal Lens	CS Lens 8mm
Lens Type	HD Lens / IR Cut Filter	HD Lens / IR Cut Filter	HD Lens / IR Cut Filter
Gain Control	Auto	Auto	Auto
3D-DNR (3D Digital Noise Reduction)	Auto	Auto	Auto
IR LED / IR Distance	3 Array IR / 10-20 Mtr.	42 IR ø 5mm 12 MIL/ 40-50Mtr..	6- Array IR 42 MIL / 80-100 Mtr.
Video Output	AHD - BNC	AHD - BNC	AHD - BNC
Power Source	12 V DC ± 10%	12 V DC ± 10%	12 V DC ± 10%
Current Drawn	550mA (Max.)	550mA (Max.)	1600mA (Max.)
Operating Temperature	-10°C to +55°C	-10°C to +55°C	-10°C to +55°C

## AHD 3.0MP CAMERA



Specification	VIN-AHD-E17-30ID-AR-6	VIN-AHD-E17-30IB-AR-6
Image Sensor	1/2.7" HD-CMOS	1/2.7" HD-CMOS
Resolution	PAL/NTSC : (2048x1536) 3MP	PAL/NTSC : (2048x1536) 3MP
Minimum Illumintion	0.1Lux (Color/Day) , 0Lux(B/W)	0.1Lux (Color/Day) , 0Lux(B/W)
Shutter Type	1/50(1/60)s~1/100,000s	1/50(1/60)s~1/100,000s
Camera Pixels	3.0MP (2048P)	3.0MP (2048P)
White Balance	Auto Tracking White Balance	Auto Tracking White Balance
OSD Function	Optional	Optional
Lens Furnished	3.6mm MP HD Lens	3.6mm MP HD Lens
Lens Type	HD Lens / IR Cut Filter	HD Lens / IR Cut Filter
Gain Control	Auto	Auto
3D-DNR (3D Digital Noise Reduction)	Auto	Auto
IR LED / IR Distance	6- Array IR LED / up to 20-30Mtr.	6- Array IR LED / up to 20-30Mtr.
Video Output	AHD - BNC	AHD - BNC
Power Source	12 V DC $\pm$ 10%	12 V DC $\pm$ 10%
Current Drawn	500mA (Max.)	500mA (Max.)
Operating Temperature	-10°C to +55°C	-10°C to +55°C



## AHD 4.0MP CAMERA



Specification	VIN-AHD-E17-40ID-AR-6	VIN-AHD-E17-40IB-AR-6
Image Sensor	1/3" HD-CMOS	1/3" HD-CMOS
Resolution	PAL/NTSC : (2688x1520) 4MP	PAL/NTSC : (2688x1520) 4MP
Minimum Illumintion	0.1Lux (Color/Day) , 0Lux(B/W)	0.1Lux (Color/Day) , 0Lux(B/W)
Shutter Type	1/25(1/30)s~1/50,000s	1/25(1/30)s~1/50,000s
Camera Pixels	4.0MP (2688x1520)	4.0MP (2688x1520)
White Balance	Auto Tracking White Balance	Auto Tracking White Balance
OSD Function	Optional	Optional
Lens Furnished	3.6mm MP HD Lens	3.6mm MP HD Lens
Lens Type	HD Lens / IR Cut Filter	HD Lens / IR Cut Filter
Gain Control	Auto	Auto
3D-DNR (3D Digital Noise Reduction)	Auto	Auto
IR LED / IR Distance	6- Array IR LED / up to 20-30Mtr.	6- Array IR LED / up to 20-30Mtr.
Video Output	AHD - BNC	AHD - BNC
Power Source	12 V DC $\pm$ 10%	12 V DC $\pm$ 10%
Current Drawn	500mA (Max.)	500mA (Max.)
Operating Temperature	-10°C to +55°C	-10°C to +55°C

## IP 1.3MP CAMERA



Specification	VIN-IP-L14-96ID-AR6	VIN-IP-A17-96IBAR6-L	VIN-IP-A17-96IBAR6
Image Sensor	1/3" HD-CMOS	1/3" HD-CMOS	1/3" HD-CMOS
Lens Mount	3.6mm MP HD Lens	3.6mm MP HD Lens	3.6mm MP HD Lens
Minimum Illumintion	0.5 Lux(Color/Day): 0 Lux With IR on(B/W)	0.5 Lux(Color/Day): 0 Lux With IR on(B/W)	0.5 Lux(Color/Day): 0 Lux With IR on(B/W)
P2P	Supported	Supported	Supported
Video Compression	H.264 Video Compression / Support Dual Stream	H.264 Video Compression / Support Dual Stream	H.264 Video Compression / Support Dual Stream
Frame Rate	1.3 Megapixel @ 25FPS	1.3 Megapixel @ 25FPS	1.3 Megapixel @ 25FPS
Image Output	Main Stream:1280x960@1-25fps Sub Stream:640x360@1-25fps	Main Stream:1280x960@1-25fps Sub Stream:640x360@1-25fps	Main Stream:1280x960@1-25fps Sub Stream:640x360@1-25fps
Shutter Speed	Auto/Manual, 1/3(4) ~ 1/10,000s	Auto/Manual, 1/3(4) ~ 1/10,000s	Auto/Manual, 1/3(4) ~ 1/10,000s
ONVIF	Yes	Yes	Yes
White Balance	Auto	Auto	Auto
Network Interface	1RJ45 Ethernet Interface	1RJ45 Ethernet Interface	1RJ45 Ethernet Interface
Network Function	Free Client Software	Free Client Software	Free Client Software
IR Distance	6-Array IR LED / up to 20-30Mtr...	6-Array IR LED / up to 20-30Mtr...	6-Array IR LED / up to 20-30Mtr...
Working Condition	-10°C – +55°C (32°F–133°F) , 10% - 90%PH	-10°C – +55°C (32°F–133°F) , 10% - 90%PH	-10°C – +55°C (32°F–133°F) , 10% - 90%PH
Power Supply	12 VDC / 2A	12 VDC / 2A	12 VDC / 2A

## IP 1.3MP CAMERA



Specification	VIN-IP-L14-96B42-VF	VIN-IP-L14-96AR-A6
Image Sensor	1/3" HD-CMOS	1/3" HD-CMOS
Lens Mount	2.8~12mm Varifocal Lens	CS Lens 8mm (6mm,16mm Optional)
Minimum Illumintion	0.5 Lux(Color/Day); 0 Lux With IR on(B/W)	0.5 Lux(Color/Day); 0 Lux With IR on(B/W)
P2P	Supported	Supported
Video Compression	H.264 Video Compression Support Dual Stream	H.264 Video Compression Support Dual Stream
Frame Rate	1.3 Megapixel @ 25FPS	1.3 Megapixel @ 25FPS
Image Output	Main Stream:1280x960@1-25fps Sub Stream:640x360@1-25fps	Main Stream:1280x960@1-25fps Sub Stream:640x360@1-25fps
Shutter Speed	Auto/Manual, 1/3(4) ~ 1/10,000s	Auto/Manual, 1/3(4) ~ 1/10,000s
ONVIF	Yes	Yes
White Balance	Auto	Auto
Network Interface	1RJ45 Ethernet Interface	1RJ45 Ethernet Interface
Network Function	Free Client Software	Free Client Software
IR Distance	42 IR $\varnothing$ 5mm 12 MIL/35Mtr..	6-Array IR 42 MIL / 80-100 Mtr.
Working Condition	-10°C – +55°C (32°F–133°F) , 10% - 90%PH	-10°C – +55°C (32°F–133°F) , 10% - 90%PH
Power Supply	12 VDC / 2A	12 VDC / 4A

## IP 2.0MP CAMERA H.265



Specification	VIN-IP-L14-108ID-AR6	VIN-IP-A17-108IBAR6-L	VIN-IP-A17-108IBAR6
Image Sensor	1/2.9" HD-CMOS	1/2.9" HD-CMOS	1/2.9" HD-CMOS
Lens Mount	3.6mm MP HD Lens	3.6mm MP HD Lens	3.6mm MP HD Lens
Minimum Illumintion	0.5 Lux(Color/Day): 0 Lux With IR on(B/W)	0.5 Lux(Color/Day): 0 Lux With IR on(B/W)	0.5 Lux(Color/Day): 0 Lux With IR on(B/W)
P2P	Supported	Supported	Supported
Video Compression	H.264 Video Compression / Support Dual Stream	H.264 Video Compression / Support Dual Stream	H.264 Video Compression / Support Dual Stream
Frame Rate	2.0 Megapixel @ 25FPS	2.0 Megapixel @ 25FPS	2.0 Megapixel @ 25FPS
Image Output	Main Stream:1920x1080 @1-25fps Sub Stream:640x360@1-25fps	Main Stream:1920x1080 @1-25fps Sub Stream:640x360@1-25fps	Main Stream:1920x1080 @1-25fps Sub Stream:640x360@1-25fps
Shutter Speed	Auto/Manual, 1/3(4) ~ 1/10,000s	Auto/Manual, 1/3(4) ~ 1/10,000s	Auto/Manual, 1/3(4) ~ 1/10,000s
ONVIF	Yes	Yes	Yes
White Balance	Auto	Auto	Auto
Network Interface	1RJ45 Ethernet Interface	1RJ45 Ethernet Interface	1RJ45 Ethernet Interface
Network Function	Free Client Software	Free Client Software	Free Client Software
IR Distance	6-Array IR LED / up to 20-30Mtr...	6-Array IR LED / up to 20-30Mtr...	6-Array IR LED / up to 20-30Mtr...
Working Condition	-10°C – +55°C (32°F–133°F) , 10% - 90%PH	-10°C – +55°C (32°F–133°F) , 10% - 90%PH	-10°C – +55°C (32°F–133°F) , 10% - 90%PH
Power Supply	12 VDC / 2A	12 VDC / 2A	12 VDC / 2A

## IP 2.0MP CAMERA H.265



Specification	VIN-IP-L14-108IB42-VF	VIN-IP-L14-108AR-A6
Image Sensor	1/2.9" HD-CMOS	1/2.9" HD-CMOS
Lens Mount	2.8~12mm Varifocal Lens	CS Lens 8mm (6mm,16mm Optional)
Minimum Illumintion	0.5 Lux(Color/Day): 0 Lux With IR on(B/W)	0.5 Lux(Color/Day): 0 Lux With IR on(B/W)
P2P	Supported	Supported
Video Compression	H.264 Video Compression Support Dual Stream	H.264 Video Compression Support Dual Stream
Frame Rate	2.0 Megapixel @ 25FPS	2.0 Megapixel @ 25FPS
Image Output	Main Stream:1920x1080 @1-25fps Sub Stream:640x360@1-25fps	Main Stream:1920x1080 @1-25fps Sub Stream:640x360@1-25fps
Shutter Speed	Auto/Manual, 1/3(4) ~ 1/10,000s	Auto/Manual, 1/3(4) ~ 1/10,000s
ONVIF	Yes	Yes
White Balance	Auto	Auto
Network Interface	1RJ45 Ethernet Interface	1RJ45 Ethernet Interface
Network Function	Free Client Software	Free Client Software
IR Distance	42 IR ∅ 5mm 12 MIL/35Mtr..	6-Array IR 42 MIL / 80-100 Mtr.
Working Condition	-10°C – +55°C (32°F–133°F) , 10% - 90%PH	-10°C – +55°C (32°F–133°F) , 10% - 90%PH
Power Supply	12 VDC / 2A	12 VDC / 4A

## IP 3.0MP CAMERA H.265



Specification	VIN-IP-L14-308ID-AR6	VIN-IP-A17-308IBAR6-L	VIN-IP-A17-308IBAR6
Image Sensor	1/3" HD-CMOS	1/3" HD-CMOS	1/3" HD-CMOS
Lens Mount	3.6mm MP HD Lens	3.6mm MP HD Lens	3.6mm MP HD Lens
Minimum Illumintion	0.5 Lux(Color/Day); 0 Lux With IR on(B/W)	0.5 Lux(Color/Day); 0 Lux With IR on(B/W)	0.5 Lux(Color/Day); 0 Lux With IR on(B/W)
P2P	Supported	Supported	Supported
Video Compression	H.264 Video Compression / Support Dual Stream	H.264 Video Compression / Support Dual Stream	H.264 Video Compression / Support Dual Stream
Frame Rate	3.0 Megapixel @ 25FPS	3.0 Megapixel @ 25FPS	3.0 Megapixel @ 25FPS
Image Output	Main Stream:2048x1536 @1-25fps Sub Stream:640x360@1-25fps	Main Stream:2048x1536 @1-25fps Sub Stream:640x360@1-25fps	Main Stream:2048x1536 @1-25fps Sub Stream:640x360@1-25fps
Shutter Speed	Auto/Manual, 1/3(4) ~ 1/10,000s	Auto/Manual, 1/3(4) ~ 1/10,000s	Auto/Manual, 1/3(4) ~ 1/10,000s
ONVIF	Yes	Yes	Yes
White Balance	Auto	Auto	Auto
Network Interface	1RJ45 Ethernet Interface	1RJ45 Ethernet Interface	1RJ45 Ethernet Interface
Network Function	Free Client Software	Free Client Software	Free Client Software
IR Distance	6-Array IR LED / up to 20-30Mtr...	6-Array IR LED / up to 20-30Mtr...	6-Array IR LED / up to 20-30Mtr...
Working Condition	-10°C – +55°C (32°F–133°F) , 10% - 90%PH	-10°C – +55°C (32°F–133°F) , 10% - 90%PH	-10°C – +55°C (32°F–133°F) , 10% - 90%PH
Power Supply	12 VDC / 2A	12 VDC / 2A	12 VDC / 2A

## IP 3.0MP CAMERA H.265



Specification	VIN-IP-L14-308IB42-VF	VIN-IP-L14-308AR-A6
Image Sensor	1/3" HD-CMOS	1/3" HD-CMOS
Lens Mount	2.8~12mm Varifocal Lens	CS Lens 8mm (6mm,16mm Optional)
Minimum Illumintion	0.5 Lux(Color/Day): 0 Lux With IR on(B/W)	0.5 Lux(Color/Day): 0 Lux With IR on(B/W)
P2P	Supported	Supported
Video Compression	H.264 Video Compression Support Dual Stream	H.264 Video Compression Support Dual Stream
Frame Rate	3.0 Megapixel @ 25FPS	3.0 Megapixel @ 25FPS
Image Output	Main Stream:2048x1536 @1-25fps Sub Stream:640x360@1-25fps	Main Stream:2048x1536 @1-25fps Sub Stream:640x360@1-25fps
Shutter Speed	Auto/Manual, 1/3(4) ~ 1/10,000s	Auto/Manual, 1/3(4) ~ 1/10,000s
ONVIF	Yes	Yes
White Balance	Auto	Auto
Network Interface	1RJ45 Ethernet Interface	1RJ45 Ethernet Interface
Network Function	Free Client Software	Free Client Software
IR Distance	42 IR ∅ 5mm 12 MIL/35Mtr..	6-Array IR 42 MIL / 80-100 Mtr.
Working Condition	-10°C – +55°C (32°F–133°F) , 10% - 90%PH	-10°C – +55°C (32°F–133°F) , 10% - 90%PH
Power Supply	12 VDC / 2A	12 VDC / 4A

## IP 4.0MP CAMERA H.265



Specification	VIN-IP-L14-408ID-AR6	VIN-IP-A17-408IBAR6-L	VIN-IP-A17-408IBAR6
Image Sensor	1/3" HD-CMOS	1/3" HD-CMOS	1/3" HD-CMOS
Lens Mount	3.6mm MP HD Lens	3.6mm MP HD Lens	3.6mm MP HD Lens
Minimum Illumintion	0.5 Lux(Color/Day): 0 Lux With IR on(B/W)	0.5 Lux(Color/Day): 0 Lux With IR on(B/W)	0.5 Lux(Color/Day): 0 Lux With IR on(B/W)
P2P	Supported	Supported	Supported
Video Compression	H.264 Video Compression / Support Dual Stream	H.264 Video Compression / Support Dual Stream	H.264 Video Compression / Support Dual Stream
Frame Rate	4.0 Megapixel @ 19FPS	4.0 Megapixel @ 19FPS	4.0 Megapixel @ 19FPS
Image Output	Main Stream:2560x1440 @1-19fps Sub Stream:720x480@1-25fps	Main Stream:2560x1440 @1-19fps Sub Stream:720x480@1-25fps	Main Stream:2560x1440 @1-19fps Sub Stream:720x480@1-25fps
Shutter Speed	Auto/Manual, 1/25 ~ 1/10,000s	Auto/Manual, 1/25 ~ 1/10,000s	Auto/Manual, 1/25 ~ 1/10,000s
ONVIF	Yes	Yes	Yes
White Balance	Auto	Auto	Auto
Network Interface	1RJ45 Ethernet Interface	1RJ45 Ethernet Interface	1RJ45 Ethernet Interface
Network Function	Free Client Software	Free Client Software	Free Client Software
IR Distance	6-Array IR LED / up to 20-30Mtr...	6-Array IR LED / up to 20-30Mtr...	6-Array IR LED / up to 20-30Mtr...
Working Condition	-10°C – +55°C (32°F–133°F) , 10% - 90%PH	-10°C – +55°C (32°F–133°F) , 10% - 90%PH	-10°C – +55°C (32°F–133°F) , 10% - 90%PH
Power Supply	12 VDC / 2A	12 VDC / 2A	12 VDC / 2A



## IP 4.0MP CAMERA H.265



Specification	VIN-IP-L14-408IB42-VF	VIN-IP-L14-408AR-A6
Image Sensor	1/3" HD-CMOS	1/3" HD-CMOS
Lens Mount	2.8~12mm Varifocal Lens	CS Lens 8mm (6mm,16mm Optional)
Minimum Illumintion	0.5 Lux(Color/Day): 0 Lux With IR on(B/W)	0.5 Lux(Color/Day): 0 Lux With IR on(B/W)
P2P	Supported	Supported
Video Compression	H.264 Video Compression Support Dual Stream	H.264 Video Compression Support Dual Stream
Frame Rate	4.0 Megapixel @ 19FPS	4.0 Megapixel @ 19FPS
Image Output	Main Stream:2560x1440 @1-19fps Sub Stream:640x360@1-25fps	Main Stream:2560x1440 @1-19fps Sub Stream:640x360@1-25fps
Shutter Speed	Auto/Manual, 1/25 ~ 1/10,000s	Auto/Manual, 1/25 ~ 1/10,000s
ONVIF	Yes	Yes
White Balance	Auto	Auto
Network Interface	1RJ45 Ethernet Interface	1RJ45 Ethernet Interface
Network Function	Free Client Software	Free Client Software
IR Distance	42 IR ∅ 5mm 12 MIL/35Mtr..	6-Array IR 42 MIL / 80-100 Mtr.
Working Condition	-10°C – +55°C (32°F–133°F) , 10% - 90%PH	-10°C – +55°C (32°F–133°F) , 10% - 90%PH
Power Supply	12 VDC / 2A	12 VDC / 4A

## IP 5.0MP CAMERA H.265



Specification	VIN-IP-L14-508ID-AR6	VIN-IP-A17-508IBAR6-L	VIN-IP-A17-508IBAR6
Image Sensor	1/3" HD-CMOS	1/3" HD-CMOS	1/3" HD-CMOS
Lens Mount	3.6mm MP HD Lens	3.6mm MP HD Lens	3.6mm MP HD Lens
Minimum Illumintion	0.5 Lux(Color/Day): 0 Lux With IR on(B/W)	0.5 Lux(Color/Day): 0 Lux With IR on(B/W)	0.5 Lux(Color/Day): 0 Lux With IR on(B/W)
P2P	Supported	Supported	Supported
Video Compression	H.264 Video Compression / Support Dual Stream	H.264 Video Compression / Support Dual Stream	H.264 Video Compression / Support Dual Stream
Frame Rate	5.0 Megapixel @ 19FPS	5.0 Megapixel @ 19FPS	5.0 Megapixel @ 19FPS
Image Output	Main Stream:2592x1944 @1-19fps Sub Stream:720x480@1-19fps	Main Stream:2592x1944 @1-19fps Sub Stream:720x480@1-19fps	Main Stream:2592x1944 @1-19fps Sub Stream:720x480@1-19fps
Shutter Speed	Auto/Manual, 1/25 ~ 1/10,000s	Auto/Manual, 1/25 ~ 1/10,000s	Auto/Manual, 1/25 ~ 1/10,000s
ONVIF	Yes	Yes	Yes
White Balance	Auto	Auto	Auto
Network Interface	1RJ45 Ethernet Interface	1RJ45 Ethernet Interface	1RJ45 Ethernet Interface
Network Function	Free Client Software	Free Client Software	Free Client Software
IR Distance	6-Array IR LED / up to 20-30Mtr...	6-Array IR LED / up to 20-30Mtr...	6-Array IR LED / up to 20-30Mtr...
Working Condition	-10°C – +55°C (32°F–133°F) , 10% - 90%PH	-10°C – +55°C (32°F–133°F) , 10% - 90%PH	-10°C – +55°C (32°F–133°F) , 10% - 90%PH
Power Supply	12 VDC / 2A	12 VDC / 2A	12 VDC / 2A

## IP 5.0MP CAMERA H.265



Specification	VIN-IP-L14-508IB42-VF	VIN-IP-L14-508AR-A6
Image Sensor	1/3" HD-CMOS	1/3" HD-CMOS
Lens Mount	2.8~12mm Varifocal Lens	CS Lens 8mm (6mm,16mm Optional)
Minimum Illumintion	0.5 Lux(Color/Day): 0 Lux With IR on(B/W)	0.5 Lux(Color/Day): 0 Lux With IR on(B/W)
P2P	Supported	Supported
Video Compression	H.264 Video Compression Support Dual Stream	H.264 Video Compression Support Dual Stream
Frame Rate	5.0 Megapixel @ 19FPS	5.0 Megapixel @ 19FPS
Image Output	Main Stream:2592x1944 @1-19fps Sub Stream:640x360@1-19fps	Main Stream:2592x1944 @1-19fps Sub Stream:640x360@1-19fps
Shutter Speed	Auto/Manual, 1/25 ~ 1/10,000s	Auto/Manual, 1/25 ~ 1/10,000s
ONVIF	Yes	Yes
White Balance	Auto	Auto
Network Interface	1RJ45 Ethernet Interface	1RJ45 Ethernet Interface
Network Function	Free Client Software	Free Client Software
IR Distance	42 IR ∅ 5mm 12 MIL/35Mtr..	6-Array IR 42 MIL / 80-100 Mtr.
Working Condition	-10°C – +55°C (32°F–133°F) , 10% - 90%PH	-10°C – +55°C (32°F–133°F) , 10% - 90%PH
Power Supply	12 VDC / 2A	12 VDC / 4A

## 2MP DVR



Specification	VIN-AHD-40401108	VIN-AHD-80401108
Main Processor	H.264	H.264
Pentaplex	Live recording, Playback, Backup Remote access, PTZ control, Mobile monitoring	Live recording, Playback, Backup Remote access, PTZ control, Mobile monitoring
Operating system	Embaded LINUX Operating System	Embaded LINUX Operating System
Performance	4CH AHD 1080 Resolution	8CH AHD 1080 Resolution
VGA / HDMI	VGA Support : 1080P/HDMI Support : 1080P	VGA Support : 1080P/HDMI Support : 1080P
Video	4CH BNC input, 1 CH VGA, 1CH HDMI(1080P) output	8CH BNC input, 1 CH VGA, 1CH HDMI(1080P) output
Audio	4CH RCA input, 1CH RCA ouput	4CH RCA input, 1CH RCA ouput
Alarm	No	No
PlayBack	4 CH at same time	4 CH at same time
Digital Zoom	Yes	Yes
Network Playback	Yes	Yes
PTZ	1*RS485 Support pelco-D,pelco-P Protocol	1*RS485 Support pelco-D,pelco-P Protocol
USB	2 * USB2.0	2 * USB2.0
Mobile Phone	Support iPhone, Mac, and Android Mobile Phone	Support iPhone, Mac, and Android Mobile Phone
HDD Capacity	Up to 8TB, SATA Interface HDD*1	Up to 8TB, SATA Interface HDD*1
Network Interface	1*RJ45,100Mbps Ethernet	1*RJ45,100Mbps Ethernet
Upgrade / Backup	USB DISK, Network	USB DISK, Network
Dimesion	255*235*45mm	255*235*45mm
Power Supply	12V / 3A	12V / 3A
Working Environment	-10°~+55 °/10~90%RH/86~106Kpa	-10°~+55 °/10~90%RH/86~106Kpa

## 2MP DVR



Specification	VIN-AHD-160802108	VIN-AHD-10841632
Main Processor	H.264	H.264
Pentaplex	Live recording, Playback, Backup Remote access, PTZ control, Mobile monitoring	Live recording, Playback, Backup Remote access, PTZ control, Mobile monitoring
Operating system	Embaded LINUX Operating System	Embaded LINUX Operating System
Performance	16CH AHD 1080 Resolution	32CH AHD 1080 Resolution
VGA / HDMI	VGA Support : 1080P/HDMI Support : 1080P	VGA Support : 1080P/HDMI Support : 1080P
Video	16CH BNC input, 1 CH VGA, 1CH HDMI(1080P) output	32CH BNC input, 1 CH VGA, 1CH HDMI(1080P) output
Audio	8CH RCA input, 1CH RCA ouput	16CH RCA input, 1CH RCA ouput
Alarm	4Ch Alarm In	16CH Input, 1CH Output
PlayBack	4CH at same time	8CH at same time
Digital Zoom	Yes	Yes
Network Playback	Yes	Yes
PTZ	1*RS485 Support pelco-D,pelco-P Protocol	1*RS485 Support pelco-D,pelco-P Protocol
USB	2 * USB2.0	2 * USB2.0
Mobile Phone	Support iPhone, Mac, and Android Mobile Phone	Support iPhone, Mac, and Android Mobile Phone
HDD Capacity	Up to 8TB, SATA Interface HDD*2	Up to 8TB, SATA Interface HDD*4
Network Interface	1*RJ45,100Mbps Ethernet	1*RJ45,100Mbps Ethernet
Upgrade / Backup	USB DISK, Network	USB DISK, Network
Dimesion	335*275*50mm	440x380x70mm
Power Supply	12V /4A	12V / 5A
Working Environment	-10°~+55 °/10~90%RH/86~106Kpa	-10°~+55 °/10~90%RH/86~106Kpa

## 4MP DVR



Specification	VIN-AHD-5104	VIN-AHD-5108	VIN-AHD-5216
Main Processor	H.264	H.264	H.264
Pentaplex	Live recording, Playback, Backup Remote access, PTZ control, Mobile monitoring	Live recording, Playback, Backup Remote access, PTZ control, Mobile monitoring	Live recording, Playback, Backup Remote access, PTZ control, Mobile monitoring
Operating system	Embaded LINUX Operating System	Embaded LINUX Operating System	Embaded LINUX Operating System
Performance	4CH AHD 4MP	8CH AHD 4MP	16CH AHD 4MP
VGA / HDMI	VGA Support : 1080P/HDMI Support : 1080P	VGA Support : 1080P/HDMI Support : 1080P	VGA Support : 1080P/HDMI Support : 1080P
Video	4CH BNC input, 1 CH VGA, 1CH HDMI(1080P) output	8CH BNC input, 1 CH VGA, 1CH HDMI(1080P) output	16CH BNC input, 1 CH VGA, 1CH HDMI(1080P) output
Audio	4CH RCA input, 1CH RCA ouput	4CH RCA input, 1CH RCA ouput	8CH RCA input, 1CH RCA ouput
Alarm	No	No	4Ch Input / 1Ch Output
PlayBack	4CH at same time	4CH at same time	4CH at same time
Digital Zoom	Yes	Yes	Yes
Network Playback	Yes	Yes	Yes
PTZ	1*RS485 Support pelco-D,pelco-P Protocol	1*RS485 Support pelco-D,pelco-P Protocol	1*RS485 Support pelco-D,pelco-P Protocol
USB	2 * USB2.0	2 * USB2.0	2 * USB2.0
Mobile Phone	Support iPhone, Mac, and Android Mobile Phone	Support iPhone, Mac, and Android Mobile Phone	Support iPhone, Mac, and Android Mobile Phone
HDD Capacity	Up to 8TB, SATA Interface HDD*1	Up to 8TB, SATA Interface HDD*1	Up to 8TB, SATA Interface HDD*2
Network Interface	1*RJ45,100Mbps Ethernet	1*RJ45,100Mbps Ethernet	1*RJ45,100Mbps Ethernet
Upgrade / Backup	USB DISK, Network	USB DISK, Network	USB DISK, Network
Dimesion	255*235*45mm	255*235*45mm	380*305*55mm
Power Supply	12V / 3A	12V / 3A	12V / 4A
Working Environment	-10°~+55 °/10~90%RH/86~106Kpa	-10°~+55 °/10~90%RH/86~106Kpa	-10°~+55 °/10~90%RH/86~106Kpa

## MOBILE-DVR



Specification	VIN-9504	VIN-9504-G	VIN-9504-TG	VIN-9704C-TGH
Operating System	Embedded Linux OS	Embedded Linux OS	Embedded Linux OS	Embedded Linux OS
Video & Audio Compression	H.264 for Video / G.726 for Audio	H.264 for Video / G.726 for Audio	H.264 for Video / G.726 for Audio	H.264 for Video / G.726 for Audio
Resolution	PAL / NTSC:1280x720	PAL / NTSC:1280x720	PAL / NTSC:1280x720	PAL / NTSC:1280x720
Compound Mode	4ch 720P/4ch 960H/2ch 720P+2ch 960H	4ch 720P/4ch 960H/2ch 720P+2ch 960H	4ch 720P/4ch 960H/2ch 720P+2ch 960H	4ch 720P/4ch 960H/2ch 720P+2ch 960H
Upgrading Method	USB Disk	USB Disk	USB Disk	USB Disk
AV Input	4ch aviation interface	4ch aviation interface	4ch aviation interface	4ch aviation interface
AV output	1ch VGA video output, 1ch aviation AV output	1ch VGA video output, 1ch aviation AV output	1ch VGA video output, 1ch aviation AV output	1ch VGA video output, 1ch aviation AV output
Alarm Input / Output	4 digital inputs (2 Positive trigger, 2 negative trigger) / 1 output	4 digital inputs (2 Positive trigger, 2 negative trigger) / 1 output	4 digital inputs (2 Positive trigger, 2 negative trigger) / 1 output	4 digital inputs (2 Positive trigger, 2 negative trigger) / 1 output
SD Card / HDD	1 SDXC High speed card (up to 256G)	1 SDXC High speed card (up to 256G)	1 SDXC High speed card (up to 256G)	Up to 2TB HDD + SD Card 256GB
USB Interface	1 USB 2.0 (support U disk/mouse)	1 USB 2.0 (support U disk/mouse)	1 USB 2.0 (support U disk/mouse)	1 USB 2.0 (support U disk/mouse)
Ignition Input	1 ACC signal	1 ACC signal	1 ACC signal	1 ACC signal
SD Card Lock	Supported with Key	Supported with Key	Supported with Key	Supported with Key
Interface	1 LVTTTL	1 LVTTTL	1 LVTTTL	1 LVTTTL
Storage Media	SD card storage	SD card storage	SD card storage	SD + HDD
GPS	No	Supported	Supported	Supported
4G/3G/2G	No	No	Supported	Supported
Power Input	9~32V DC	9~32V DC	9~32V DC	10~36V DC
Power Output	12V 300mA	12V 300mA	12V 300mA	12V 300mA
Power Consumption	Standby 3mA Maximum consumption 18W @12V 1.5A @24V 0.75A	Standby 3mA Maximum consumption 18W @12V 1.5A @24V 0.75A	Standby 3mA Maximum consumption 18W @12V 1.5A @24V 0.75A	Standby 3mA Maximum consumption 18W @12V 1.5A @24V 0.75A
Working Temperature	-20 --- 70°C	-20 --- 70°C	-20 --- 70°C	-20 --- 70°C

## H.264 NVR Series



Specification	VIN-NVR-8104	VIN-NVR-8108	VIN-NVR-8232
Main Processor	HISILICON 3520D	HISILICON 3520D	HISILICON 3535
Pentaplex	Live recording, Playback, Backup Remote access, PTZ control, Mobile monitoring	Live recording, Playback, Backup Remote access, PTZ control, Mobile monitoring	Live recording, Playback, Backup Remote access, PTZ control, Mobile monitoring
Control Mode	USB Mouse, keyboard, Network	USB Mouse, keyboard, Network	USB Mouse, keyboard, Network
Performance	4Ch @ 1080 (P)	8Ch @ 1080 (P)	32Ch @ 1080 (P)
VGA / HDMI	VGA / HDMI 1080 (P)	VGA / HDMI 1080 (P)	VGA / HDMI 1080 (P)
Video	4Ch Resolution	8Ch Resolution	32Ch Resolution
Audio	4Ch Network Audio Input	8Ch Network Audio Input	32Ch Network Audio Input
Alarm	No	No	No
PlayBack	4Ch PlayBack	4Ch PlayBack	4Ch PlayBack
Digital Zoom	Yes	Yes	Yes
Protocol	ONVIF	ONVIF	ONVIF
Frame Rate Display	1080P(1920x1080)25s / 960P(1280x960) / 720P(1280x720) 25s	1080P(1920x1080)25s / 960P(1280x960) / 720P(1280x720) 25s	1080P(1920x1080)25s / 960P(1280x960) / 720P(1280x720) 25s
PTZ	Supported	Supported	Supported
USB	2 * USB2.0	2 * USB2.0	2 * USB2.0
Mobile Phone	Support iPhone, Mac, and Android Mobile Phone	Support iPhone, Mac, and Android Mobile Phone	Support iPhone, Mac, and Android Mobile Phone
HDD Capacity	Up to 6TB, SATA Interface HDD*1	Up to 6TB, SATA Interface HDD*1	Up to 6TB, SATA Interface HDD*2
Network Interface	1*RJ45,100Mbps Ethernet	1*RJ45,100Mbps Ethernet	1*RJ45,100Mbps Ethernet
Upgrade	USB DISK Network	USB DISK Network	USB DISK Network
Backup	USB DISK Network	USB DISK Network	USB DISK Network
Power Supply	12V / 3A	12V / 3A	12V / 6A
Working Environment	-10°~+55 °/10~90%RH/86~106Kpa	-10°~+55 °/10~90%RH/86~106Kpa	-10°~+55 °/10~90%RH/86~106Kpa



## H.265 NVR Series



Specification	VIN-NVR-8104-5	VIN-NVR-8108-5	VIN-NVR-8232-5
Main Processor	Hi3798M	Hi3798M	Hi3536
Pentaplex	Live recording, Playback, Backup Remote access, PTZ control, Mobile monitoring	Live recording, Playback, Backup Remote access, PTZ control, Mobile monitoring	Live recording, Playback, Backup Remote access, PTZ control, Mobile monitoring
Control Mode	USB Mouse, keyboard, Network	USB Mouse, keyboard, Network	USB Mouse, keyboard, Network
Video Compression	4Ch@5MP / 4Ch@3MP / 4Ch@2MP	4Ch@5MP / 4Ch@3MP / 8Ch@3MP / 16Ch@960P	32Ch@4MP / 24Ch@4MP / 16Ch@1080P
VGA / HDMI	VGA / HDMI 1080(P) 4K	VGA / HDMI 1080(P) 4K	VGA / HDMI 1080(P) 4K
Video	4Ch Resolution	8Ch Resolution	32Ch Resolution
Audio	4Ch Network Audio Input	8Ch Network Audio Input	32Ch Network Audio Input
Alarm	No	No	16Ch Input / 4Ch Output
Local PlayBack	1Ch@5MP / 2Ch@3MP / 4Ch@2MP	2Ch@5MP / 4Ch@3MP / 4Ch@960P	9Ch@4MP / 4Ch@5MP / 16Ch@1080P
Digital Zoom	Yes	Yes	Yes
Protocol	ONVIF	ONVIF	ONVIF
Frame Rate Display	1080P(1920x1080)25s / 960P(1280x960) / 720P(1280x720) 25s	1080P(1920x1080)25s / 960P(1280x960) / 720P(1280x720) 25s	1080P(1920x1080)25s / 960P(1280x960) / 720P(1280x720) 25s
PTZ	Supported	Supported	Supported
USB	2 * USB2.0	2 * USB2.0	2 * USB2.0
Mobile Phone	Support iPhone, Mac, and Android Mobile Phone	Support iPhone, Mac, and Android Mobile Phone	Support iPhone, Mac, and Android Mobile Phone
HDD Capacity	Up to 6TB, SATA Interface HDD*1	Up to 6TB, SATA Interface HDD*1	Up to 6TB, SATA Interface HDD*4
Network Interface	1*RJ45,100Mbps Ethernet	1*RJ45,100Mbps Ethernet	1*RJ45,100Mbps Ethernet
Upgrade	USB DISK Network	USB DISK Network	USB DISK Network
Backup	USB DISK Network	USB DISK Network	USB DISK Network
Power Supply	12V / 3A	12V / 3A	12V / 6A
Working Environment	-10°~+55 °/10~90%RH/86~106Kpa	-10°~+55 °/10~90%RH/86~106Kpa	-10°~+55 °/10~90%RH/86~106Kpa

## AHD PTZ CAMERA



Specification	VIN-AHD-G15-13PTZ36X	VIN-AHD-G15-20PTZ36X
Camera	1.3MP	2MP
Sensor	1/2.9" CMOS	1/2.8" CMOS SONY 291
Optical Zoom	36X	36X
Resolution/Effective pixels	1280*960	1920*1080
Minimum Illumination	0.1Lux	0.1Lux
IR Array	1 Superpower LED IR light+ 6 IR LED	1 Superpower LED IR light+ 6 IR LED
IR Range	150Mtr	150Mtr
Exposure Mode	Auto/Manual	Auto/Manual
Preset Position	128 preset positions	128 preset positions
Tour scan	4 tours	4 tours
Pattern Scan	4 patterns	4 patterns
Motion Detection	NO	NO
S/N Ratio	≥50dB (AGC OFF)	≥50dB (AGC OFF)
Shutter Speed	1/30s~1/10,000s	1/30s~1/10,000s
PTZ Control	Auto/Manual	Auto/Manual
Rotation Angle	Range Pan360° /Tilt180°	Range Pan360° /Tilt180°
Maximum Rotation Speed	Pan /Tilt speed 0.08°~240°/S	Pan /Tilt speed 0.08°~240°/S
Power Supply & Consumption	DC12V/5A	DC12V/5A
Preset Recovery Features	Yes	Yes
Ingress Protection	IP66	IP66
OSD	Supported	Supported
ONVIF	No	No

## IP PTZ CAMERA



Specification	VIN-IPC-L14-PTZ1336	VIN-IPC-L14-PTZ2036
Camera	1.3MP	2MP
Sensor	1/3" APTINA CMOS	1/2.8" SONY CMOS
Optical Zoom	36x	36x
Resolution/Effective pixels	1280*960	1920*1080
Minimum Illumination	0.1Lux	0.1Lux
IR Array	1 Superpower LED IR light+ 6 IR LED	1 Superpower LED IR light+ 6 IR LED
IR Range	150Mtr	150Mtr
Exposure Mode	Auto/Manual	Auto/Manual
Preset Position	128 preset positions	128 preset positions
Tour scan	4 tours	4 tours
Pattern Scan	4 patterns	4 patterns
Motion Detection	NO	NO
S/N Ratio	≥50dB (AGC OFF)	≥50dB (AGC OFF)
Shutter Speed	1/1 ~ 1/30,000s	1/1 ~ 1/30,000s
PTZ Control	Auto/Manual	Auto/Manual
Rotation Angle	Range Pan360° /Tilt180°	Range Pan360° /Tilt180°
Maximum Rotation Speed	0.1°~240°/S	0.1°~240°/S
Power Supply & Consumption	12V/5A	12V/5A
Preset Recovery Features	Yes	Yes
Ingress Protection	IP66	IP66
OSD	Supported	Supported
ONVIF	Supported	Supported

## (960/1080)P WiFi NVR Kit

### Everything is Already Configured !

- 1ps\* 4CH WiFi NVR
- 4pcs\* HD Wireless IP Camera
- 4pcs\* Power Supply
- 1ps\* UTP Cable For Testing
- 1pc\* USB Mouse
- Mobile Viewing
- P2P Supported
- Up to 20-30Mtr.. Night Distance

## No Need of Wires

## plug & play

### Two Step to Install



Power On  
NVR



Power On  
CAM



## POWER SUPPLY

### VIN-L14-PS-4



#### Key Features:

- Input Voltage AC100-240V50/60Hz
- Output Standard 12V / 4A
- Power 60W
- Output Voltage 3-24V + / - 5%
- Ripple Wave (mVp-p): <1%
- Temperature Coefficient  $\pm 0.02\%$ / deg C
- Override Protection 115% 200% Kva, automatic Recovery
- Short-Circuit Protection 1Ch Automatic Recovery
- Insulation Resistance  $\geq 30M$  Omega, DC 500V

### VIN-L14-PS-8



#### Key Features:

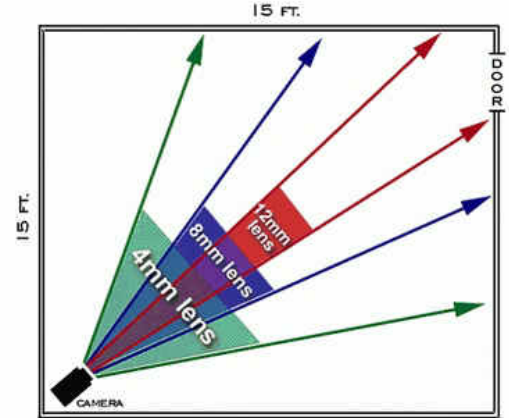
- Input Voltage AC100-240V50/60Hz
- Output Standard 12V / 8A
- Power 96W
- Output Voltage 3-24V + / - 5%
- Ripple Wave (mVp-p): <1%
- Temperature Coefficient  $\pm 0.02\%$ / deg C
- Override Protection 115% 200% Kva, automatic Recovery
- Short-Circuit Protection 1Ch Automatic Recovery
- Insulation Resistance  $\geq 30M$  Omega, DC 500V

## Lens Description

- **Focal Length** is measured in mm. In general the lower the number, the wider the angle

( 2.5mm ) = a wide angle of view

( 12mm ) = a narrow angle of view



3.6mm



6mm



12mm



60mm

## Field of View Chart

	5ft	10ft	25ft	50ft	100ft	200ft
2.8mm	6.4 x 8.6	12.9x17.1	32.1x 42.9	64.3 x 85.7	128.6 x 171.4	257.2 x 342.8
4.0mm	4.5 x 6.0	9.0 x 12.0	22.5 x 30.0	45.0 x 60.0	90.0 x 120.0	180.0 x 240.0
6.0mm	3.0 x 4.0	6.0 x 8.0	15.0 x 20.0	30.0 x 40.0	60.0 x 80.0	120.0 x 160.0
8.0mm	2.3 x 3.0	4.5 x 6.0	11.3 x 15.0	22.5 x 30.0	45.0 x 60.0	90.0 x 120.0
12.0mm	1.5 x 2.0	3.0 x 4.0	7.5 x 10.0	15.0 x 20.0	30.0 x 40.0	60.0 x 80.0
25.0mm	0.7 x 1.0	1.4 x 1.9	3.6 x 4.8	7.2 x 9.6	14.4 x 19.2	28.9 x 38.4
50.0mm	0.4 x 0.5	0.7 x 1.0	1.8 x 2.4	3.6 x 4.8	7.2 x 9.6	14.4 x 19.2
75.0mm	0.2 x x0.3	0.5 x 0.6	1.2 x 1.6	2.4 x 3.2	4.8 x 6.4	9.6 x 12.8

If you Know the distance from where your camera will be mounted to the area you wants to monitor, you can better determine what lens you need. If you wants to monitor an area 30ft by 40ft and it is 50ft away, using the chart above, you can determine you will need a 6.0mm lens.

## Terms & Conditions

### Warranty :

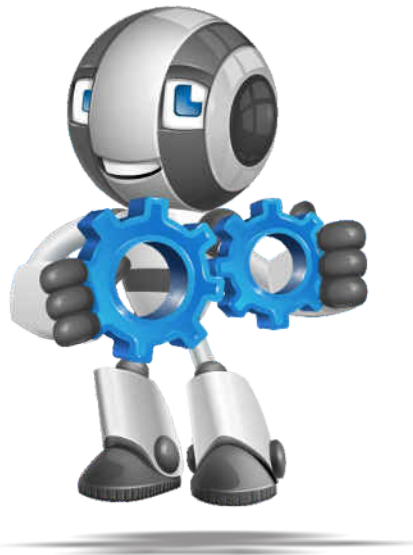
2 Yrs for Cameras, Digital Video Recorders and 1 Yrs for PTZ cameras, IP Cameras & miscellaneous products. All warranties are carry in warranty, no warranty on passive components. No warranty in physically damaged & burned cases as per Vintron warranty policy.

### 3G & 4G Dongle :

DVR connectivtiy with 3G network depends on quality of telecom service provider and based on support of dongle hardware. Vintron doesn't hold any responsibility on these services.

### Wifi & Internet :

Performance of devices and application on the internet depends on the quality and the bandwidth of wireless backbone. Vintron doesn't hold any responsibility on these services.



## Return Material Authorization (RMA) Policy

To avail the returning material policy or servicing of any product, customer have to submit or send the duly filled RMA form (available on our website) with faulty material or product to our service center.



**Head Office :**

F-90/1A, Okhla Industrial Area  
Phase-1, New Delhi - 110020  
Contact : +91-011-43740011 / 12  
Email : info@vintroninformatics.com

**Any Query, Call us :**

Toll Free : 1800 121 4322



Distributed By :



**Vintron Informatics Ltd.**

Due to continuous upgradation of Products, we reserve the rights to change the design & specifications without prior notice.

CIN: L72100DL1991PLC045276

